

ADMIRALS CROSSING



**3755 Military Trail
Jupiter, FL 33458**

HIGHLIGHTS

- Premier location - strategically located on the NE corner of Military Trail and Frederick Small Road
- Strong demographics with \$147,011 average household income within a 3-mile radius
- Excellent accessibility and visibility
- Over 31,000 employees within 3 miles

TRAFFIC COUNTS

- 29,006 on Military Trail
- 10,097 on Fredrick Small Road (east of Military Trail)

SPACE AVAILABLE

- Fully leased

JOIN THESE ESTABLISHED TENANTS



Massage Envy
SPA™



DEMOGRAPHICS*

	1 MI	3 MI	5 MI
POPULATION	8,204	72,334	132,765
HOUSEHOLDS	3,534	31,983	61,108
AHI	\$228,574	\$184,975	\$182,795

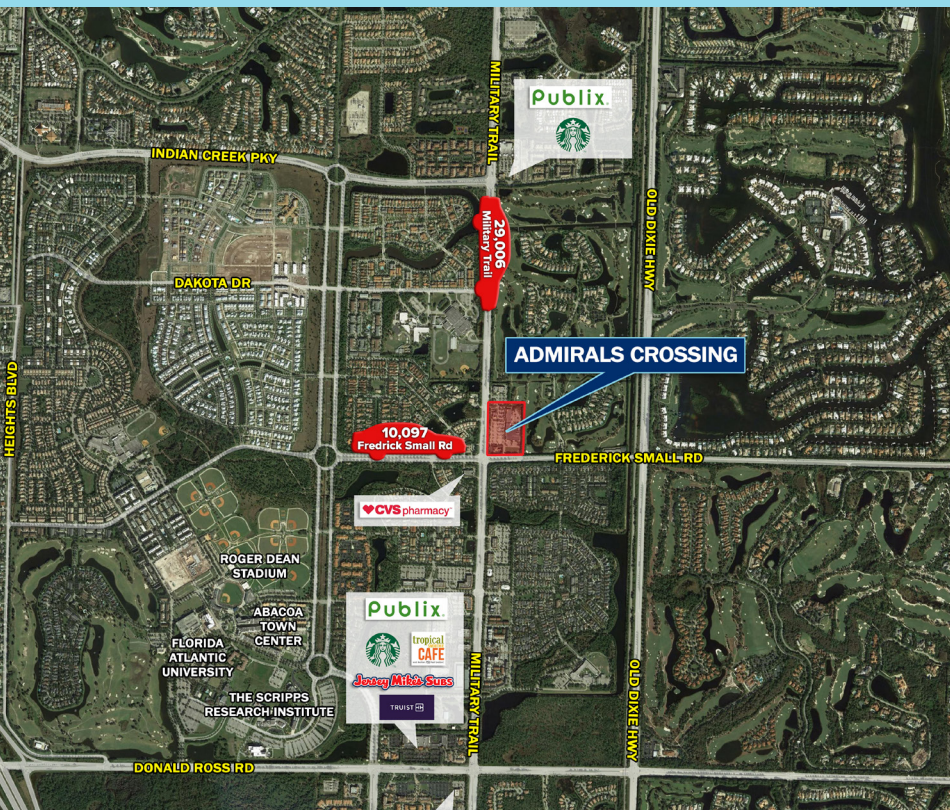
*Estimated 2023. This information was provided from government & private sources deemed to be reliable, however, it is provided without representation or warranty.



Lindsey Swart
Leasing Representative
lswart@konoversouth.com
954.513.8491 (cell)

Development. Leasing. Management.
Since 1957

ADMIRALS CROSSING



TENANT LEGEND

BAY	TENANT	SQ FT
3757 MILITARY TRAIL		
	Sprouts Farmers Market	30,900
3761 MILITARY TRAIL		
	Planet Fitness	17,800
3755 MILITARY TRAIL		
A1	Massage Envoy	2,400
A5	JR Jewels	1,200
A7	Jimmy John's	1,600
A9	Timothy J Salon	1,600
A11	China Wok	1,600
B2	Admirals Crossing	
	Dentistry	1,400
B6	Nailsmax	2,800
B8	Beneditti's Pizza	1,400
B10	My Gym	2,800
B16	Berry Fresh Cafe	4,200
NIC		
OP A	Medical Office	
OP B	Medical Office	
3655 MILITARY TRAIL		
	Inlet Liquors	