

LANDSTAR MARKETPLACE



70,784 SF

13801 & 13807 Landstar Blvd.
Orlando, FL 32824

HIGHLIGHTS

- Anchored by Walmart Neighborhood Market
- Located at SEC of Central Florida GreeneWay (SR 417) and Landstar Blvd., approximately 1.3 miles east of Florida Turnpike interchange and 1.5 miles north of Osceola Parkway
- Surrounded by new and planned residential developments
- Cater-corner to Publix-anchored shopping center

TRAFFIC COUNTS

- 49,000 on SR 417 (East of Turnpike)
- 31,500 on Landstar Blvd. (South of SR 417)

JOIN THESE NATIONAL TENANTS



DEMOGRAPHICS*

	1 MI	3 MI	5 MI
POPULATION	17,553	90,672	189,650
HOUSEHOLDS	5,352	28,600	62,158
AHI	\$67,408	\$64,644	\$62,976

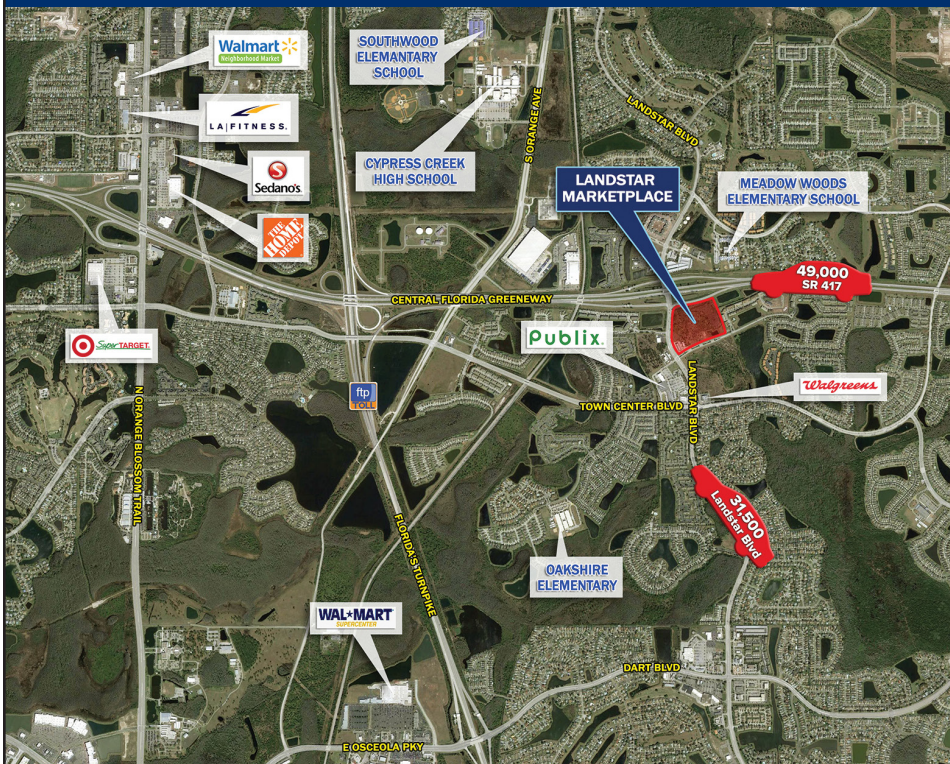
*Estimated 2018. This information was provided from government & private sources deemed to be reliable, however, it is provided without representation or warranty.



Zach Feldman
Leasing Representative
zfeldman@konoversouth.com
561.601.4474 (cell)

Development. Leasing. Management.
Since 1957

LANDSTAR MARKETPLACE



RETAIL SPACE AVAILABLE

BAY	TENANT	SQ FT
13801 LANDSTAR BLVD.		
	Walmart Neighborhood Market	43,865
13807 LANDSTAR BLVD.		
100	Le Nails	1,800
106	Woofgang Bakery	1,260
112	Chinese Wok	1,260
118	Barber Shop	1,050
124	T-Mobile	1,800
130	Marco's Pizza	1,428
136-142	Acute Patient Care	1,428
154	Dentist	2,030
160	Anytime Fitness	4,900
LOT 4	Car Wash	1.89 AC
LOT 6	Arby's	0.93 AC