

UNIVERSITY CORNERS

13470 Cedar Rd., University Heights, OH 44118

MSA: CLEVELAND-ELYRIA MSA

LATITUDE: 41.579310 LONGITUDE: -81.556030

- Available for Lease
- Units ranging from: 1,200-7,000 SF
- ATM drive-thru available next to Family Dollar



LOCATION

13470 Cedar Road | University Heights, Ohio 44118

HIGHLIGHTS

- Under new Ownership
- 1,200 - 7000 SF available
- +/- 0.30 acres available across the street for future development
- 22,110 Vehicles per day on Cedar Rd
- Surrounding retailers include Whole Foods, PetSmart, Dollar Tree, Panera Bread, and Target
- Monument sign available
- Excellent visibility

TRAFFIC COUNTS

Cedar Rd = 22,110 VPD



DEMOGRAPHICS

2019 Estimates	1 mile	3 mile	5 mile
Population	21,065	149,229	334,492
Households	9,014	67,180	150,631
Average HH Income	\$93,118	\$87,099	\$69,057
Daytime Employees	5,662	75,992	275,120

CONTACT

BEN MCMILLON

bmcillion@anchorcleveland.com | 216.260.9220

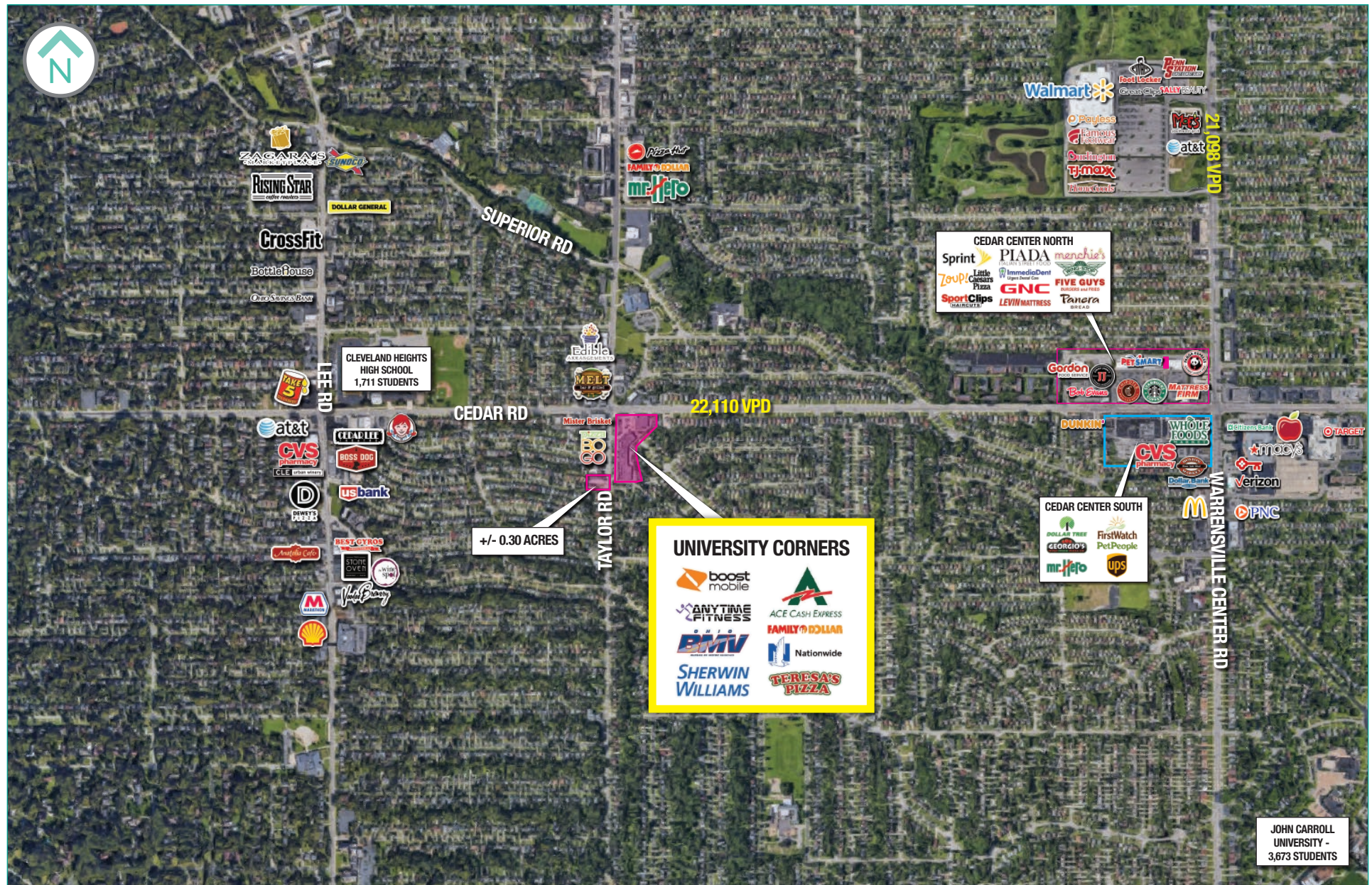
Anchor

24500 Chagrin Blvd., Suite 100
Beachwood, Ohio 44122

WWW.ANCHORCLEVELAND.COM

13470 Cedar Rd., University Heights, OH 44118

13470 Cedar Rd., University Heights, OH 44118

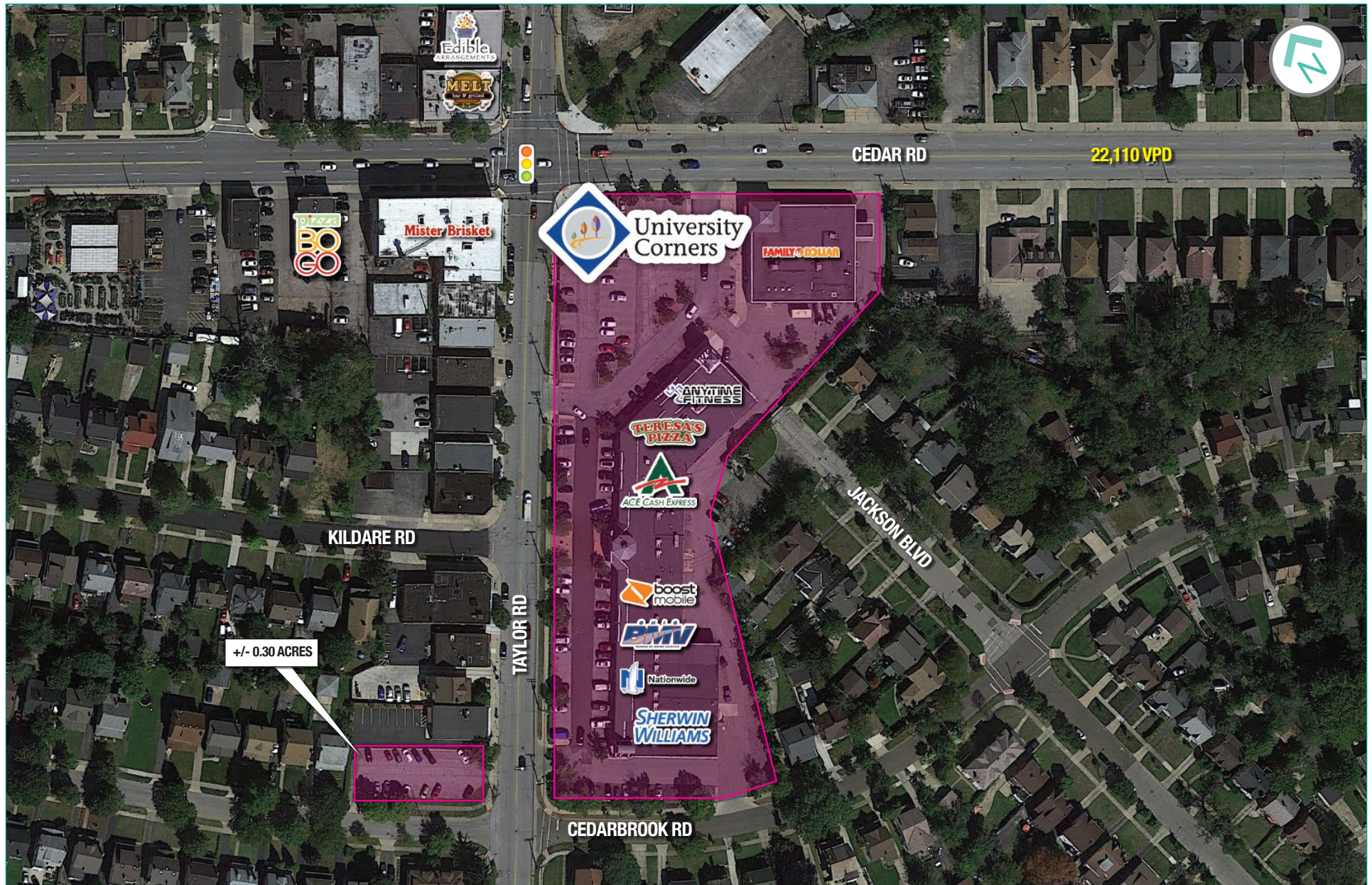


BEN MCMILLON - 216.260.9220

UNIVERSITY CORNERS

13470 Cedar Rd., University Heights, OH 44118

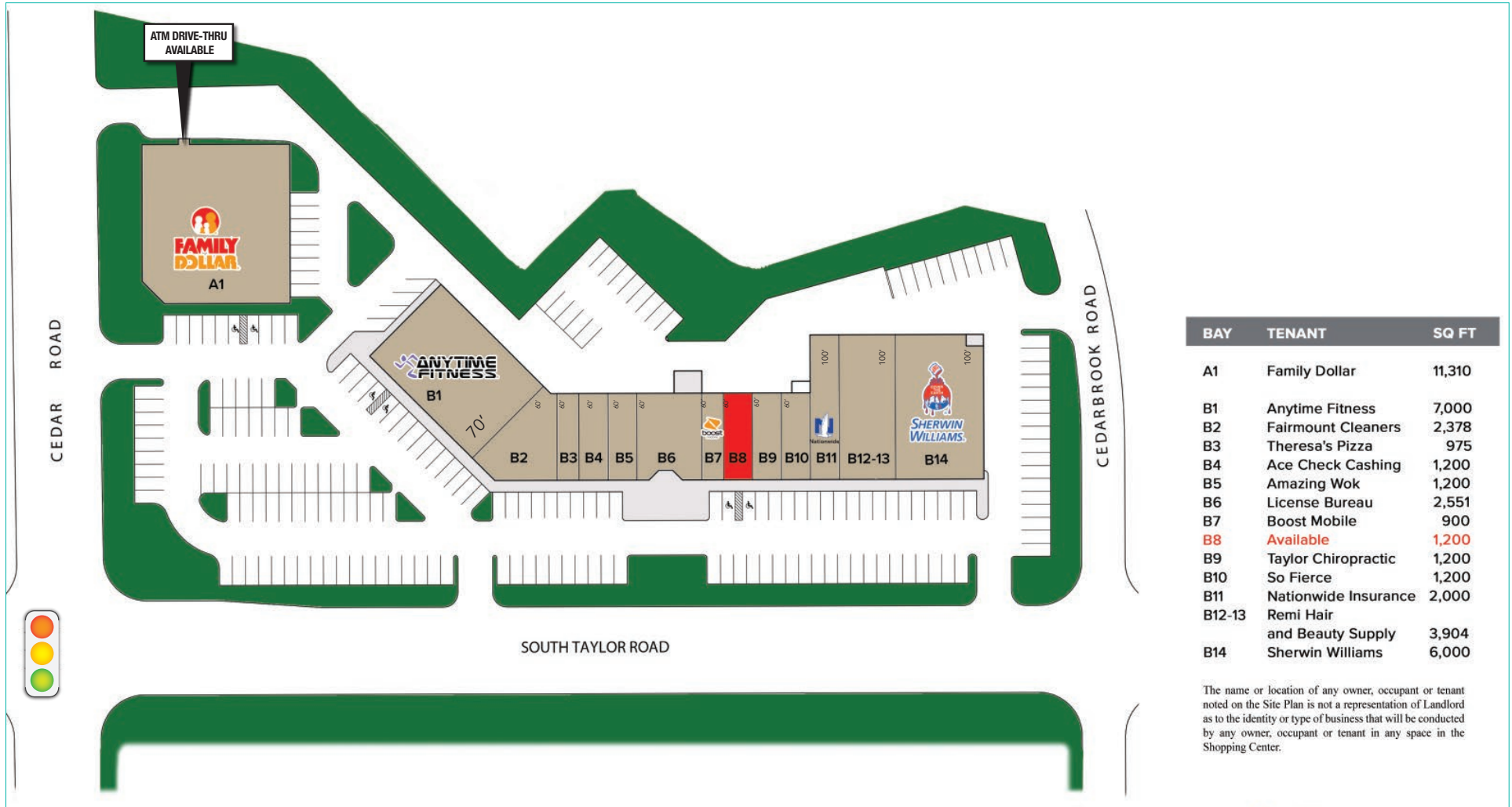
Anchor



BEN MCMILLON - 216.260.9220

The information submitted herein is not guaranteed. Although obtained from reliable resources, it is subject to errors, omissions, prior sale and withdrawal from the market without notice. Anchor Cleveland, LLC, and its agents, associates and employees make no guarantee, warranty, or representation of the property. All images contained herein are the property of Anchor Cleveland, LLC and shall not be duplicated or reproduced without express written consent of Anchor Cleveland, LLC.

UNIVERSITY CORNERS SITE PLAN



BEN MCMILLON - 216.260.9220

UNIVERSITY CORNERS

13470 Cedar Rd., University Heights, OH 44118

Anchor

+/- 0.30 ACRE SITE PLAN



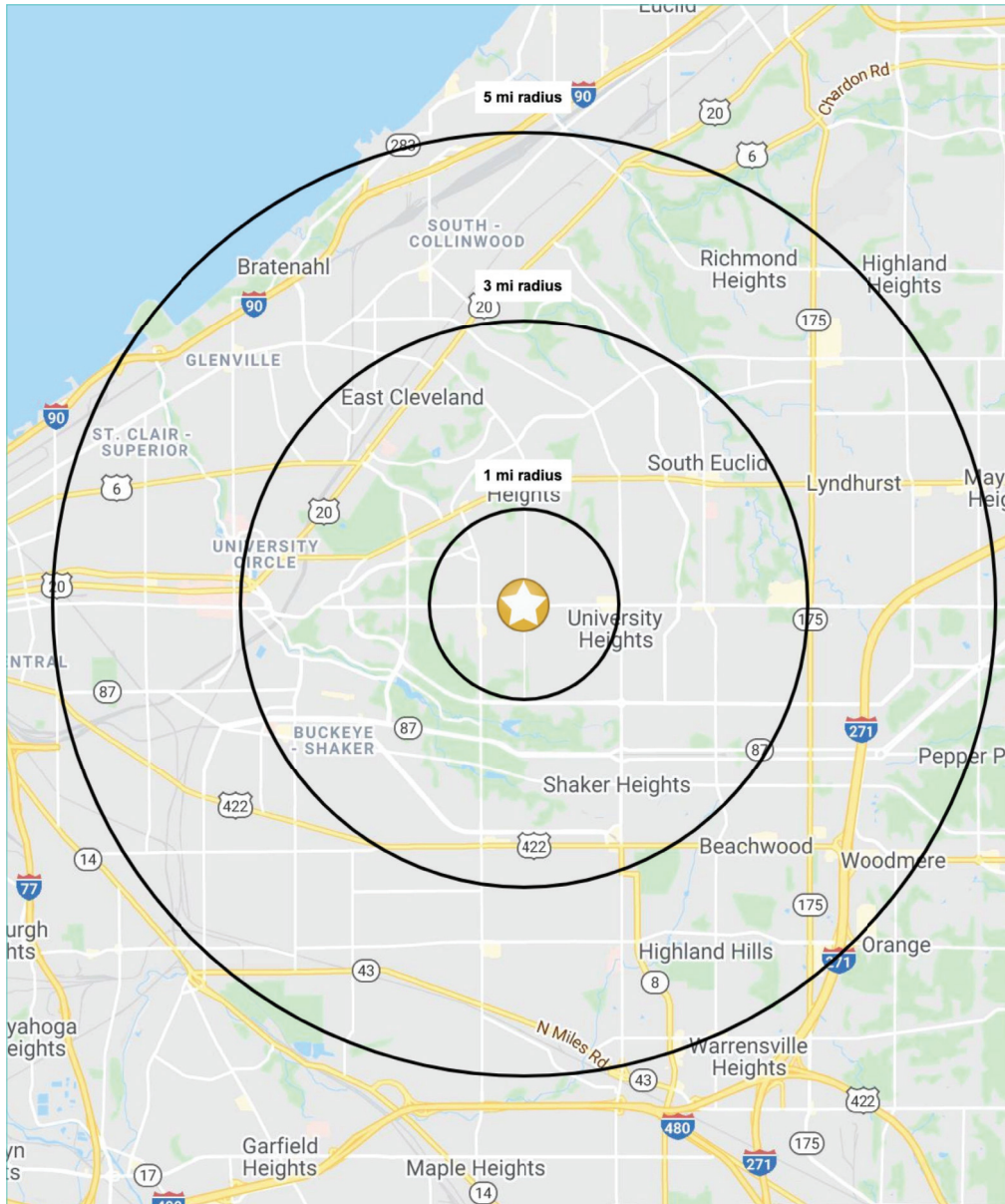
BEN MCMILLON - 216.260.9220

The information submitted herein is not guaranteed. Although obtained from reliable resources, it is subject to errors, omissions, prior sale and withdrawal from the market without notice. Anchor Cleveland, LLC, and its agents, associates and employees make no guarantee, warranty, or representation of the property. All images contained herein are the property of Anchor Cleveland, LLC and shall not be duplicated or reproduced without express written consent of Anchor Cleveland, LLC.

UNIVERSITY CORNERS

13470 Cedar Rd., University Heights, OH 44118

Anchor



SUMMARY PROFILE

2000-2010 Census, 2020 Estimates with 2025 Projections
Calculated using Weighted Block Centroid from Block Groups



Lat/Lon: 41.5013/-81.556

S Taylor Rd & Cedar Rd

		1 mi radius	3 mi radius	5 mi radius
POPULATION	2020 Estimated Population	21,065	149,229	334,492
	2025 Projected Population	19,576	147,312	342,776
	2010 Census Population	22,153	155,992	349,981
	2000 Census Population	24,829	179,173	428,502
	Projected Annual Growth 2020 to 2025	-1.4%	-0.3%	0.5%
	Historical Annual Growth 2000 to 2020	-0.8%	-0.8%	-1.1%
	2020 Median Age	36.5	37.8	39.6
HOUSEHOLDS	2020 Estimated Households	9,014	67,180	150,631
	2025 Projected Households	8,188	64,799	150,672
	2010 Census Households	8,931	66,092	148,581
	2000 Census Households	9,649	74,028	170,819
	Projected Annual Growth 2020 to 2025	-1.8%	-0.7%	-
	Historical Annual Growth 2000 to 2020	-0.3%	-0.5%	-0.6%
RACE AND ETHNICITY	2020 Estimated White	48.5%	42.3%	30.2%
	2020 Estimated Black or African American	44.1%	49.3%	63.8%
	2020 Estimated Asian or Pacific Islander	3.1%	5.1%	3.1%
	2020 Estimated American Indian or Native Alaskan	0.1%	0.1%	0.2%
	2020 Estimated Other Races	4.1%	3.2%	2.7%
	2020 Estimated Hispanic	2.5%	2.4%	2.0%
INCOME	2020 Estimated Average Household Income	\$93,118	\$87,099	\$69,057
	2020 Estimated Median Household Income	\$66,889	\$60,774	\$49,524
	2020 Estimated Per Capita Income	\$39,869	\$39,442	\$31,347
EDUCATION (AGE 25+)	2020 Estimated Elementary (Grade Level 0 to 8)	1.2%	2.1%	2.9%
	2020 Estimated Some High School (Grade Level 9 to 11)	4.6%	5.7%	8.8%
	2020 Estimated High School Graduate	15.7%	19.5%	25.9%
	2020 Estimated Some College	18.3%	19.5%	22.4%
	2020 Estimated Associates Degree Only	8.0%	6.6%	7.1%
	2020 Estimated Bachelors Degree Only	24.6%	21.6%	16.4%
	2020 Estimated Graduate Degree	27.6%	25.0%	16.4%
BUSINESS	2020 Estimated Total Businesses	575	5,483	14,136
	2020 Estimated Total Employees	5,662	75,992	275,120
	2020 Estimated Employee Population per Business	9.8	13.9	19.5
	2020 Estimated Residential Population per Business	36.6	27.2	23.7

This report was produced using data from private and government sources deemed to be reliable. The information herein is provided without representation or warranty.

BEN MCMILLON - 216.260.9220